

## W-ABA 10t - lifting point for welding, loadable from any direction

Artikel-Nr: 7900355



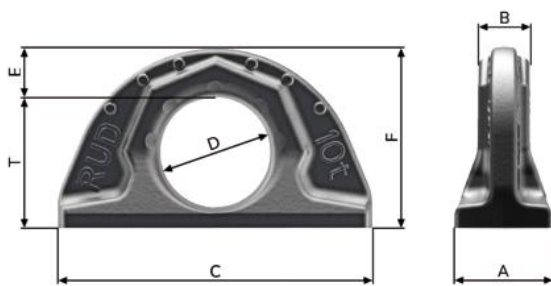
Weldable lifting point, full working load in all directions.

- Forged, no rattling noise or shaking even at strong vibrations or shock loads, simple connection of lifting means possible.
- Clear marking of the minimum WLL for all loading directions.
- Requirements of the DIN 18800 are fulfilled by the weld arrangement (circular fillet weld), this means non occurrence of contact/crevice corrosion due to the endless weld seam (therefore suitable for outdoor constructions). Material of weld-on-block 1.6541 (23MnNiCrMo52) (please observe user instruction).
- Patented markings for easy determination for withdraw of service.
- Tested and certified by DGUV, Testing specifications: GS-HM-36: 2023-06, Certificate-Nr.: HM 250041
- Significant product characteristics of the W-ABA are subject to property right claims.
- Simple and fast welding installation.
- Confirmation of the low temperature ability to -40°C by the notch bar impact test is possible upon request (before order is placed).
- The WLL statement corresponds to the minimum WLL in all loading directions. Higher WLL possible when location and installation is optimised (compare WLL chart / user instruction).

Welding should only be carried out by qualified persons according to ISO 9606-1. Other important RUD specific information and specialities to our RUD lifting points can be found in the specific user instruction.

W-ABA 10t - lifting point for welding, loadable from any direction

Artikel-Nr: 7900355



|             |          |           |
|-------------|----------|-----------|
| weight      | 5.37 kg  | 11.84 lbs |
| Nominal WLL | 10000 kg | 22040 lbs |
| T           | 95 mm    | 3-3/4"    |
| A           | 70 mm    | 2-3/4"    |
| B           | 38 mm    | 1-1/2"    |
| C           | 228 mm   | 9"        |
| D           | 80 mm    | 3-1/8"    |
| E           | 35 mm    | 1-3/8"    |
| F           | 130 mm   | 5-1/8"    |